



LAND FOR SALE

<i>TOTAL ACRES</i>	55
<i>PRICE</i>	\$310,000.
<i>Price Per Acre</i>	\$5,637.
<i>Owner</i>	Kimble Family L.P. and Cecilia Kimble
<i>Operator</i>	Owner
<i>County & State</i>	Stark Co. IL
<i>Location</i>	½ mile West of Bradford and 2 miles North on IL 40 to East end of Property; on the West side of IL 40.
<i>Possession Date</i>	TBD
<i>Drainage Info</i>	Natural
<i>Average Productivity</i>	Tillable in CRP
<i>Taxable Acres</i>	55
<i>Net RE Taxes</i>	\$1,473.77 \$26.79 p/A (est.)
<i>Taxes Payable In</i>	Current Year
<i>Topography</i>	Level to Rolling

TO CONTACT LISTING AGENT

Call: Dave Hueneke
Cell: 815-291-6550
Email: daveiowafarmland@gmail.com

LEGAL DESCRIPTION (abbreviated)

18 /A M/L in the SW ¼ of the SE ¼ of Sect. 10 and 37/A M/L in the NW ¼ of the NE ¼ of Sect. 15 T-14-N R-7-E Stark Co. IL

COMMENTS & BUILDING INFORMATION

1. No Buildings
2. Great little recreation piece
With year-round water
With hard base crossing
Excellent habitat for all
Kinds of wildlife.
All stages of Walnut
Growth.

F.S.A. INFORMATION

Farmland	33.07
Crop Acres	0
CRP Acres	33.07
Wheat Base	0
Wheat Yield	
Corn Base	0
Corn Yield	
Soybean Base	0
Soybean Yield	

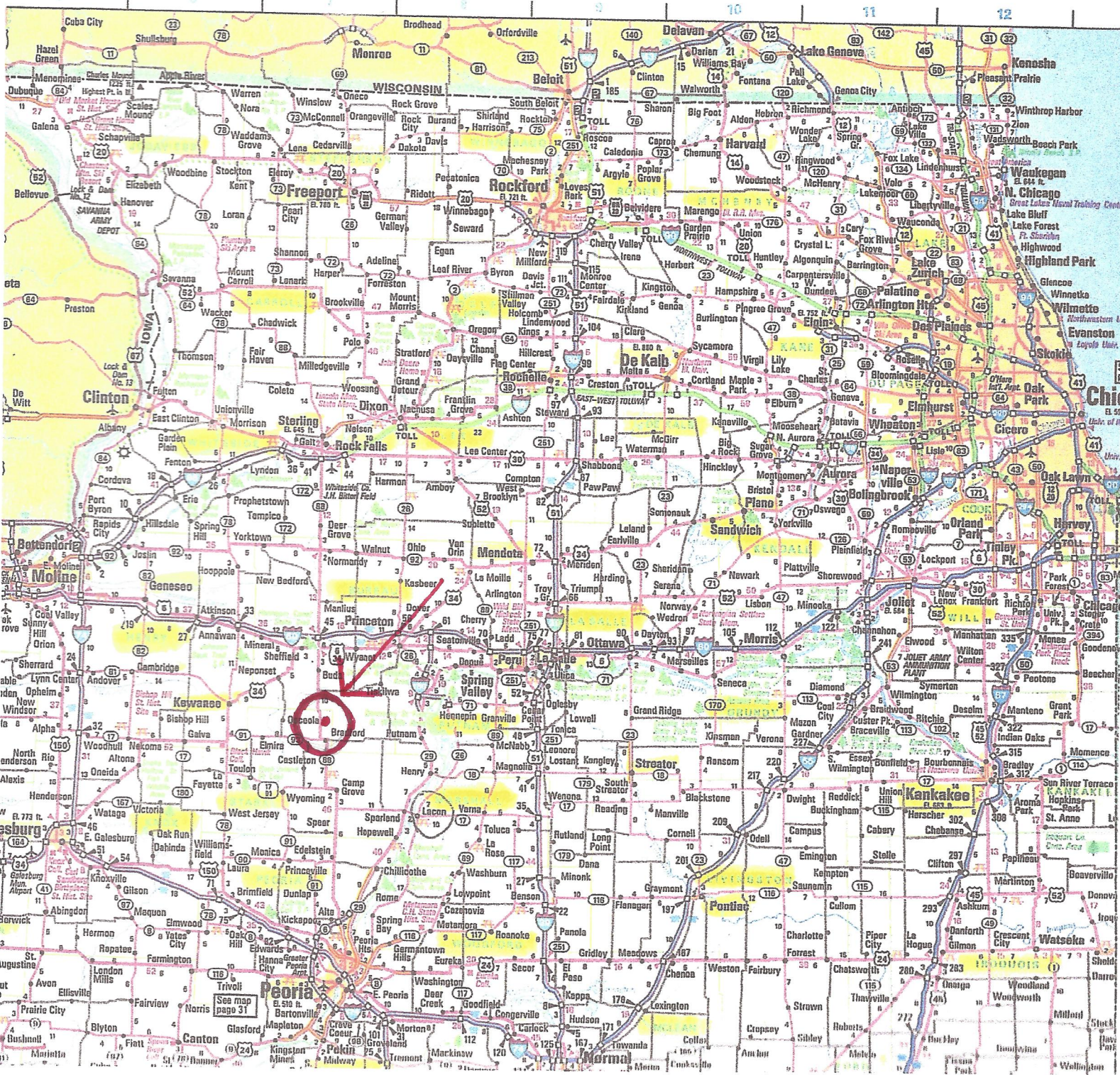
APPROX. BREAKDOWN OF ACRES

Total Acres	55
Tillable Acres	33.07
CRP Acres	33.07
Farmstead	0
Roads	0
Waterways	3.66
Timber	17.96
Pasture	0

LEASE/FSA INFORMATION

1. 3 CRP Contracts:
Total 33.07 Acres
8,030. Total Payment Ave.
Ave. 242.60 p/A
Contracts Expire from
2023 - 2026

* All information for this farm is gained from Surety; County FSA; County Tax records and any other source that is deemed to be reliable but not guaranteed to be 100% accurate.



Iowa Farm Land Brokers

David Hueneker

Midwest Farmland

Cell: 815-291-6550

daveiowafarmland@gmail.com

P.O. Box 700

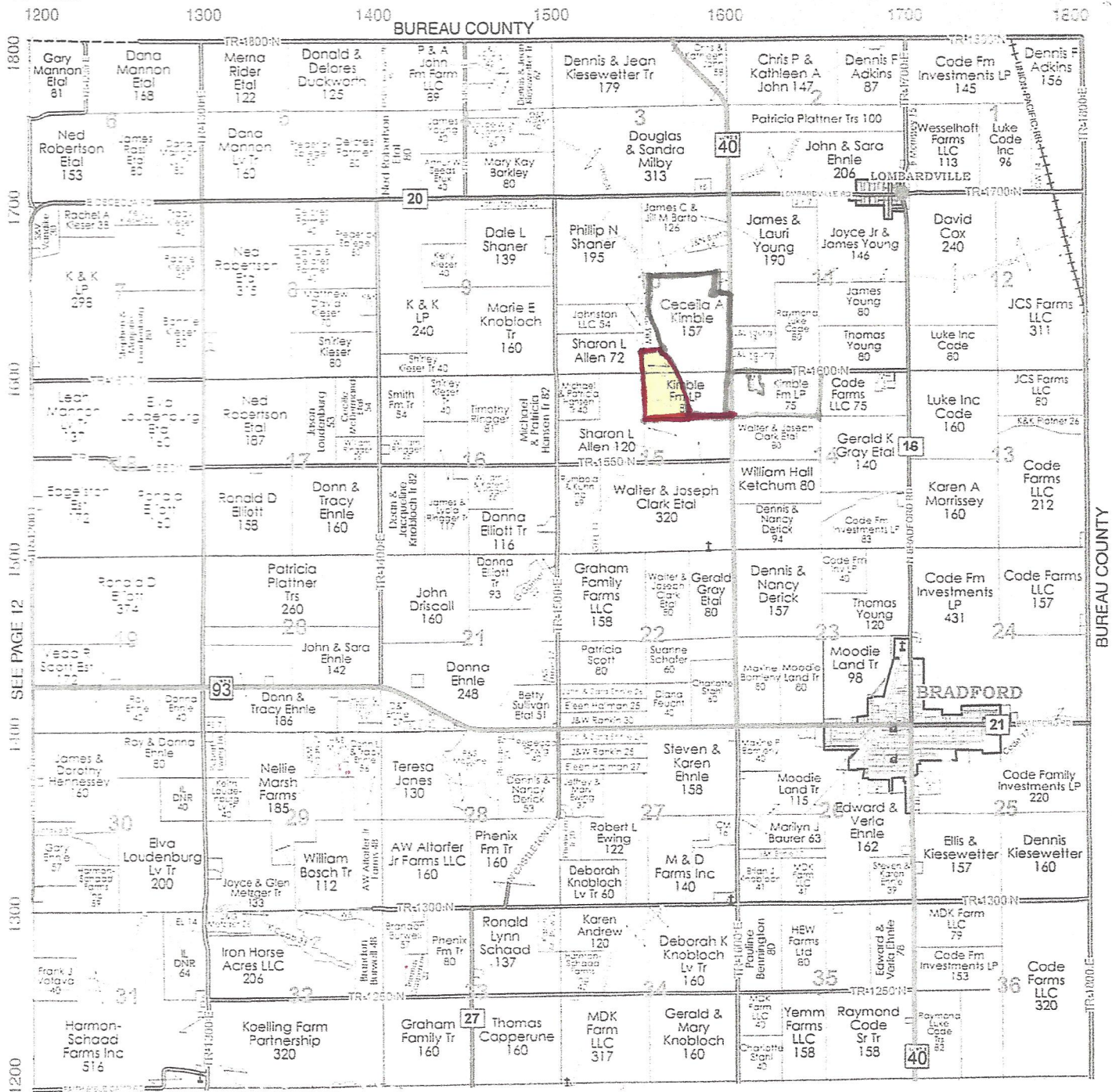
Maquoketa, IA 52060



Osceola

Township 14N - Range 7E

Copyright © 2015 Mapping Solutions



Iowa Farm Land Brokers

David Hueneke

Midwest Farmland

Cell: 815-291-6550

daveiowafarmland@gmail.com

P.O. Box 700

Maquoketa, IA 52060

Aerial Map



Maps Provided By:



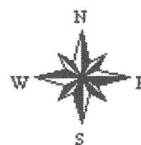
© AgriData, Inc. 2020 www.AgriDataInc.com

Field borders provided by Farm Service Agency as of 5/21/2008.

Map Center: 41° 12' 20.73, -89° 40' 56.45

0ft 455ft 910ft

15-14N-7E
Stark County
Illinois



8/26/2020

Aerial Map



Maps Provided By:



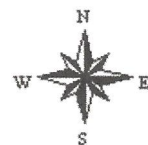
© AgriData, Inc. 2020 www.AgrDataInc.com

Field borders provided by Farm Service Agency as of 5/21/2008.

Map Center: 41° 12' 21.59, -89° 40' 55.7

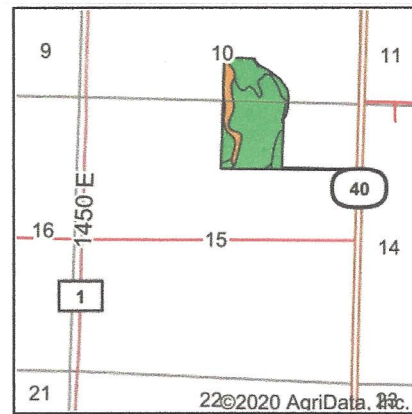
15-14N-7E
Stark County
Illinois

0ft 445ft 891ft



8/26/2020

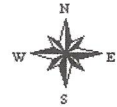
Soils Map



State: **Illinois**
 County: **Stark**
 Location: **15-14N-7E**
 Township: **Osceola**
 Acres: **55.06**
 Date: **8/26/2020**



Maps Provided By:
surety
 CUSTOMIZED ONLINE MAPPING
 © AgriData, Inc. 2020 www.AgriDataInc.com



Soils data provided by USDA and NRCS.

Area Symbol: IL175, Soil Area Version: 13

Code	Soil Description	Acres	Percent of field	II. State Productivity Index Legend	Subsoil rooting a	Corn Bu/A	Soybeans Bu/A	Wheat Bu/A	Oats Bu/A b	Sorghum c Bu/A	Alfalfa d hay, T/A	Grass-legume e hay, T/A	Crop productivity index for optimum management
3451cA	Lawson silt loam, cool mesic, 0 to 2 percent slopes, frequently flooded	31.82	57.8%	■	FAV	190	61	73	97	0	0.00	5.77	140
3076A	Otter silt loam, 0 to 2 percent slopes, frequently flooded	7.31	13.3%	■	FAV	186	61	71	93	0	0.00	5.64	139
**549F	Marseilles silt loam, 18 to 35 percent slopes	6.41	11.6%	■	UNF	**98	**32	**39	**51	0	**2.48	0.00	**73
**753B	Massbach silt loam, 2 to 5 percent slopes	3.09	5.6%	■	FAV	**149	**49	**59	**77	0	**3.85	0.00	**110
**448D3	Mona clay loam, 10 to 18 percent slopes, severely eroded	2.73	5.0%	■	FAV	**131	**41	**51	**67	0	**3.45	0.00	**96
**199B	Plano silt loam, 2 to 5 percent slopes	1.94	3.5%	■	FAV	**192	**59	**73	**102	0	**6.95	0.00	**141
**448C2	Mona silt loam, 5 to 10 percent slopes, eroded	1.11	2.0%	■	FAV	**151	**47	**59	**77	0	**3.96	0.00	**110
**199B2	Plano silt loam, 2 to 5 percent slopes, eroded	0.31	0.6%	■	FAV	**184	**57	**70	**98	0	**6.67	0.00	**135
234A	Sunbury silt loam, 0 to 2 percent slopes	0.18	0.3%	■	FAV	179	57	70	93	0	0.00	5.52	131
3074A	Radford silt loam, 0 to 2 percent slopes, frequently flooded	0.16	0.3%	■	FAV	186	58	73	99	0	0.00	5.52	136

Soils data provided by USDA and NRCS. Soils data provided by University of Illinois at Champaign-Urbana.



Code	Soil Description	Acres	Percent of field	Il. State Productivity Index Legend	Subsoil rooting a	Corn Bu/A	Soybeans Bu/A	Wheat Bu/A	Oats Bu/A b	Sorghum c Bu/A	Alfalfa d hay, T/A	Grass-legume e hay, T/A	Crop productivity index for optimum management
Weighted Average						172.7	55.6	66.6	88.3	*-	1.04	4.12	127.6

Table: Optimum Crop Productivity Ratings for Illinois Soil by K.R. Olson and J.M. Lang, Office of Research, ACES, University of Illinois at Champaign-Urbana. Version: 1/2/2012 Amended Table S2 B811

Crop yields and productivity indices for optimum management (B811) are maintained at the following NRES web site:

<http://soilproductivity.nres.illinois.edu/>

** Indexes adjusted for slope and erosion according to Bulletin 811 Table S3

a UNF = unfavorable; FAV = favorable

b Soils in the southern region were not rated for oats and are shown with a zero "0".

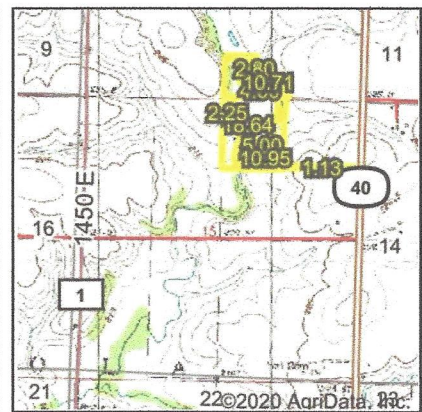
c Soils in the northern region or in both regions were not rated for grain sorghum and are shown with a zero "0".

d Soils in the poorly drained group were not rated for alfalfa and are shown with a zero "0".

e Soils in the well drained group were not rated for grass-legume and are shown with a zero "0".

*c: Using Capabilities Class Dominant Condition Aggregation Method

Wetlands Map



State: **Illinois**
 Location: **15-14N-7E**
 County: **Stark**
 Township: **Osceola**
 Date: **10/27/2020**



0ft 3800ft 7599ft

Classification Code	Type	Acres
R2UBH	Riverine	2.92
PFO1A	Freshwater Forested/Shrub Wetland	0.56
R4SBC	Riverine	0.18
Total Acres		3.66

Data Source: National Wetlands Inventory website. U.S. DoI, Fish and Wildlife Service, Washington, D.C. <http://www.fws.gov/wetlands/>



United States
Department of
Agriculture

County, Illinois



Cecilia Kimble

Illinois
BureauU.S. Department of Agriculture
Farm Service Agency

FARM: 9810

Prepared: 1/23/17 11:49 AM

Crop Year: 2017

Page: 1 of 1

Report ID: FSA-156EZ

Abbreviated 156 Farm Record

DISCLAIMER: This is data extracted from the web farm database. Because of potential messaging failures in MIDAS, this data is not guaranteed to be an accurate and complete representation of data contained in the MIDAS system, which is the system of record for Farm Records.

Operator Name	Farm Identifier	Recon Number
KIRK HOWARD KIMBLE		

Farms Associated with Operator:
None

CRP Contract Number(s): 1731C

Farmland	Cropland	DCP Cropland	WBP	WRP/EWP	CRP Cropland	GRP	Farm Status	Number of Tracts
156.7	145.99	145.99	0.0	0.0	4.0	0.0	Active	1
State Conservation	Other Conservation	Effective DCP Cropland	Double Cropped	MPL/FWP				
0.0	0.0	141.99	0.0	0.0				

ARC-IC NONE	ARC-CO CORN , SOYBN	ARC/PLC	PLC NONE	PLC-Default NONE
----------------	------------------------	---------	-------------	---------------------

Crop	Base Acreage	CTAP Tran Yield	PLC Yield	CCC-505 CRP Reduction
CORN	139.26		140	0.0
SOYBEANS	0.99		36	0.0
Total Base Acres:	140.25			

Tract Number: 10143 Description: Sec 10 Osceola Township - Stark Co.

BIA Range Unit Number:

HEL Status: NHEL: no agricultural commodity planted on undetermined fields

Wetland Status: Wetland determinations not complete

WL Violations: None

Farmland	Cropland	DCP Cropland	WBP	WRP/EWP	CRP Cropland	GRP
156.7	145.99	145.99	0.0	0.0	4.0	0.0
State Conservation	Other Conservation	Effective DCP Cropland	Double Cropped	MPL/FWP		
0.0	0.0	141.99	0.0	0.0		

Crop	Base Acreage	CTAP Tran Yield	PLC Yield	CCC-505 CRP Reduction
CORN	139.26		140	0.0
SOYBEANS	0.99		36	0.0
Total Base Acres:	140.25			

Owners: CECILIA A KIMBLE

Other Producers: None

Kimble Family LP

Illinois
MarshallU.S. Department of Agriculture
Farm Service Agency

FARM: 3863

Prepared: 1/23/17 11:48 AM

Crop Year: 2017

Report ID: FSA-156EZ

Abbreviated 156 Farm Record

Page: 1 of 1

DISCLAIMER: This is data extracted from the web farm database. Because of potential messaging failures in MIDAS, this data is not guaranteed to be an accurate and complete representation of data contained in the MIDAS system, which is the system of record for Farm Records.

Operator Name	Farm Identifier	Recon Number
KIRK HOWARD KIMBLE		2010 17123 91

Farms Associated with Operator:

25, 643, 2308, 3012, 3647, 3847, 3903, 3910, 3927, 3937, 4083, 4257, 4274, 4368, 4378

CRP Contract Number(s): 577, 578

162.31	Farmland	Cropland	DCP Cropland	WBP	WRP/EWP	CRP Cropland	GRP	Farm Status	Number of Tracts
163.31	163.31	149.88	150.38	0.0	0.0	29.07	0.0	Active	1
5.71	State Conservation	Other Conservation	Effective DCP Cropland	Double Cropped	MPL/FWP				
157.6	0.0	0.0	121.31	0.0	0.0				

ARC-IC NONE		ARC-CO CORN, SOYBN		ARC/PLC PLC NONE		PLC-Default NONE	
Crop	Base Acreage	CTAP Tran Yield	PLC Yield	CCC-505 CRP Reduction			
CORN	88.98		154	0.0			
SOYBEANS	31.82		48	19.3			
Total Base Acres:	120.8						

Tract Number: 9857 Description: SEC14,15Osceola(T14N R7E)PIN:0214100003/0215200001

BIA Range Unit Number:

HEL Status: HEL Determinations not complete

Wetland Status: Wetland determinations not complete

WL Violations: None

157.6	Farmland	Cropland	DCP Cropland	WBP	WRP/EWP	CRP Cropland	GRP
163.31	163.31	149.88	150.38	0.0	0.0	29.07	0.0
	State Conservation	Other Conservation	Effective DCP Cropland	Double Cropped	MPL/FWP		
	0.0	0.0	121.31	0.0	0.0		

Crop	Base Acreage	CTAP Tran Yield	PLC Yield	CCC-505 CRP Reduction
CORN	88.98		154	0.0
SOYBEANS	31.82		48	19.3
Total Base Acres:	120.8			

Owners: KIMBLE FAMILY LIMITED PTPR

Other Producers: None